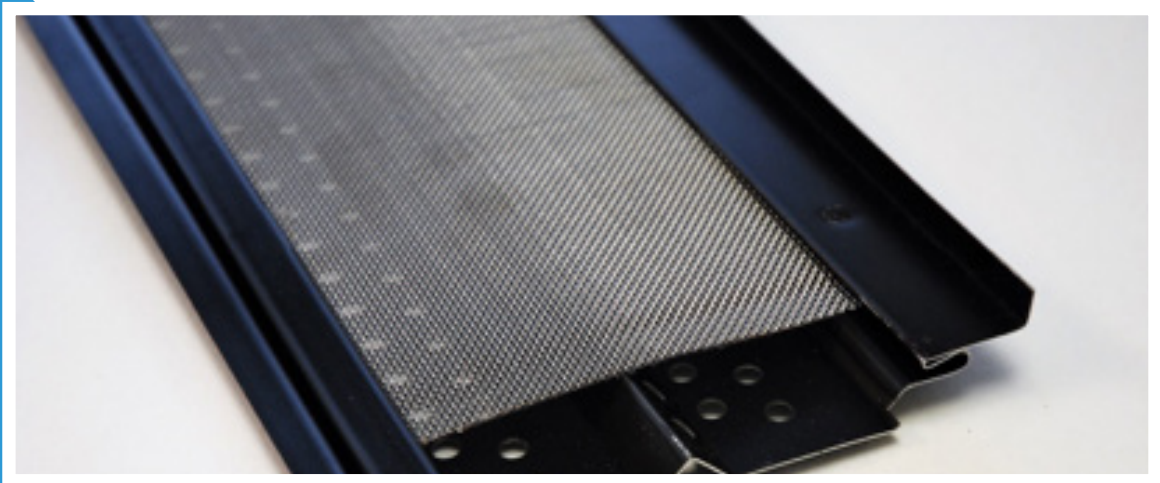




Product Reference Guide



Universal Manufacturing & Design
4238 Alternate 19
Palm Harbor, FL 34683
www.onegutterguard.com
[www. Facebook.com/onegutterguard](https://www.facebook.com/onegutterguard)

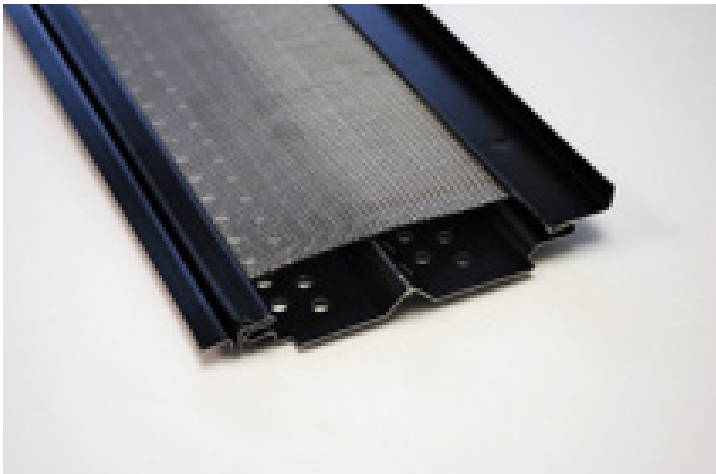
The purpose of this product reference guide is to highlight key ONE Gutter Guard™ product features, benefits, and to serve as a training tool for your sales and installation teams. Please contact our sales department at (800) 919-5996 at info@onegutterguard.com with any questions that you may have or if you require additional product information.

CHASSIS SPECIFICATIONS

Chassis (All Models)

- .024" thick 3105 H14/24 aluminum chassis
- Painted with polyester paint .7 mil thick
- Available Models
 - Fascia Mount
 - Under Shingle
- Colors: Black, White, contact manufacturer for special color requests
- Active Area: Active area is defined as the mesh area that water drains through. All 5" models have a 3" active area and all 6" models have a 4" active area

Fascia Mount



Overview

The Fascia chassis is designed to attach to the fascia of the home and the front lip of the gutter to create the perfect debris shedding angle while strengthening the entire gutter system.

Sizes

Available in 5" and 6" sizes.

Gutter Style Compatibility

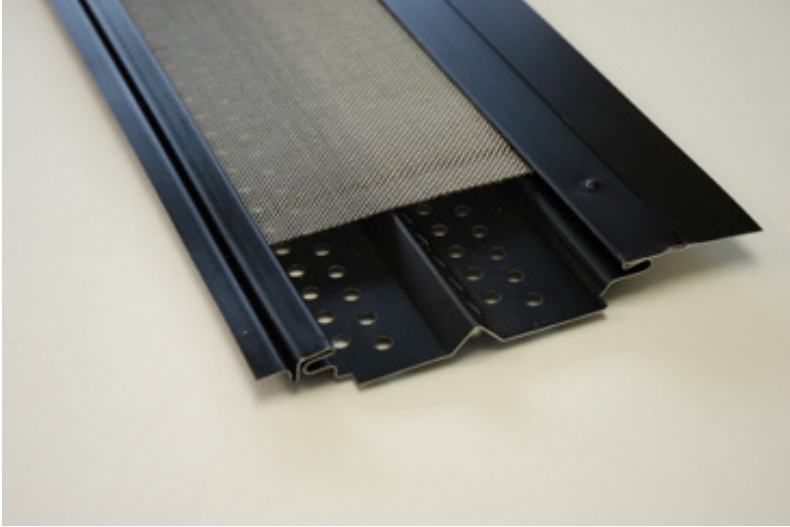
ONE Gutter Guard™ is compatible with K-Style and Half Round style of gutters. For half round gutters, compatibility is based on the type of brackets. Contact the manufacturer with the specific half round gutters and brackets you are working with.

Dimensions

5" ONE Gutter Guard: 48" long x ½" high x 5" wide

6" ONE Gutter Guard: 48" long x ½" high x 6" wide

Under Shingle



Overview

The Under Shingle chassis is designed to be installed under the shingle courses of the roof and attach to the front lip of the gutter. This product is used where the fascia mount is not possible or the under shingle is the preferred installation method.

Sizes

Available in 5" and 6" sizes.

Gutter Style Compatibility

Under Shingle ONE Gutter Guard™ is compatible with K-Style and Half Round gutters. For half round gutters, compatibility is based on the type of brackets. Contact the manufacturer with the specific half round gutters and brackets you are working with.

Dimensions

5" ONE Gutter Guard: 48" long x ½" high x 6 7/16" wide

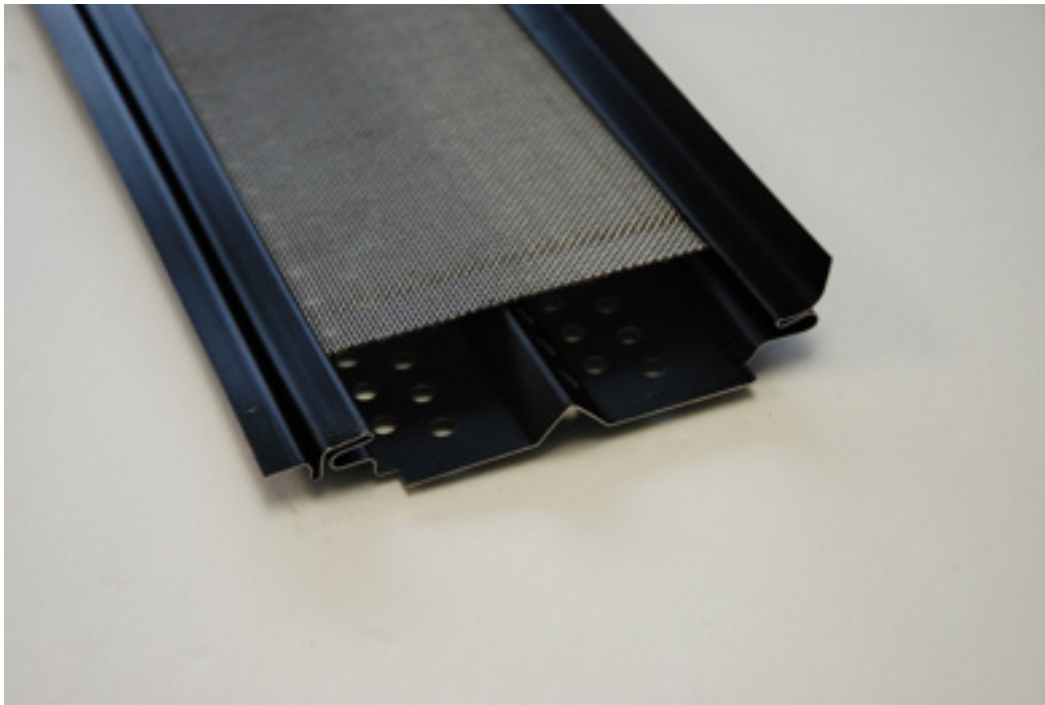
6" ONE Gutter Guard: 48" long x ½" high x 7 7/16" wide

Specialty ONE Gutter Guard™

ONE Gutter Guard™ was designed to be modified for non-traditional installations. The product can be modified in a variety of ways. Below are two specialty models that can be ordered. Please contact our sales department at (800) 919-5996 or at info@onegutterguard.com for specialty product prices and additional product specifications.

ONE Gutter Guard™ – Short Back Model

When you encounter an installation with an extended drip edge or less than standard widths are present, you can order a special ONE Gutter Guard™. The Short Back model is designed to be installed the same way as a standard fascia installation.



Sizes

Available in 5" and 6" sizes.

Gutter Style Compatibility

Short Back ONE Gutter Guard™ is compatible with K-Style and Half Round gutters. For half round gutters, compatibility is based on the type of brackets. Contact the manufacturer with the specific half round gutters and brackets you are working with.

Dimensions

5" ONE Gutter Guard: 48" long x ½" high x 4 ½" wide

6" ONE Gutter Guard: 48" long x ½" high x 5 ½" wide

ONE Gutter Guard™ – Flat Back Model

When you encounter an installation where there are fascia gutters or less than standard widths are present, you can order a special ONE Gutter Guard™. The Flat Back model is designed to be installed the same as a standard under shingle installation, but is narrower in width.



Sizes

Available in 5" and 6" sizes.

Gutter Style Compatibility

Flat Back ONE Gutter Guard™ is compatible with K-Style and Half Round gutters. For half round gutters, compatibility is based on the type of brackets. Contact the manufacturer with the specific half round gutters and brackets you are working with.

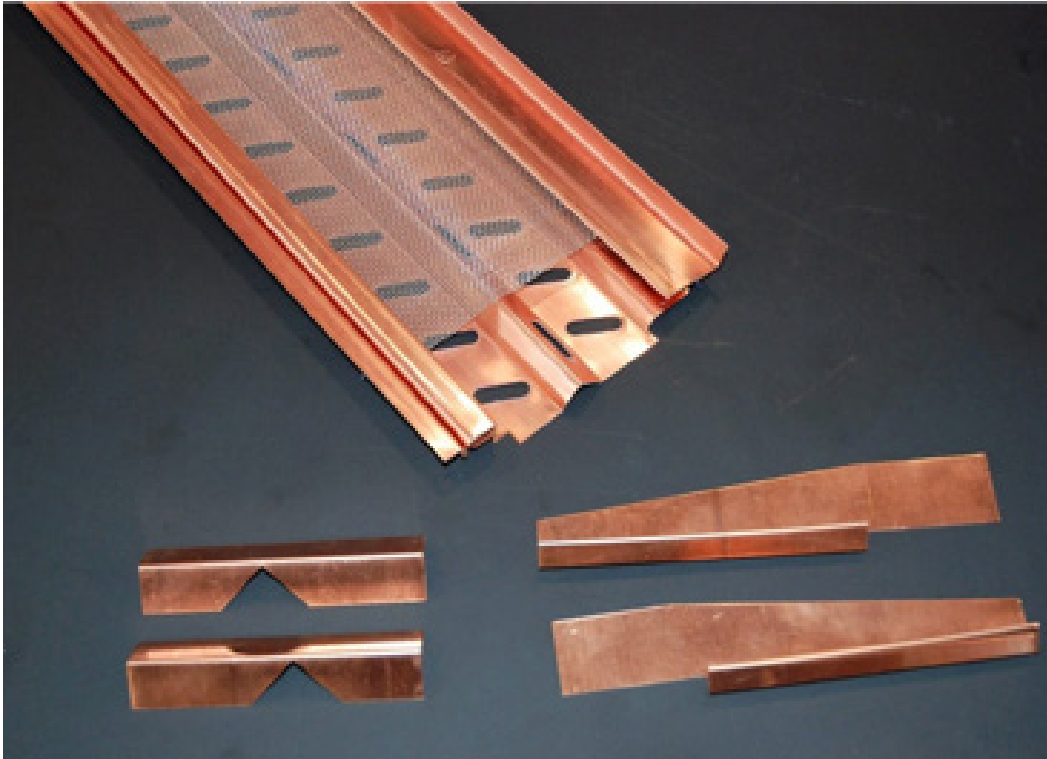
Dimensions

5" ONE Gutter Guard: 48" long x ½" high x 5 ½" wide

6" ONE Gutter Guard: 48" long x ½" high x 6 ½" wide

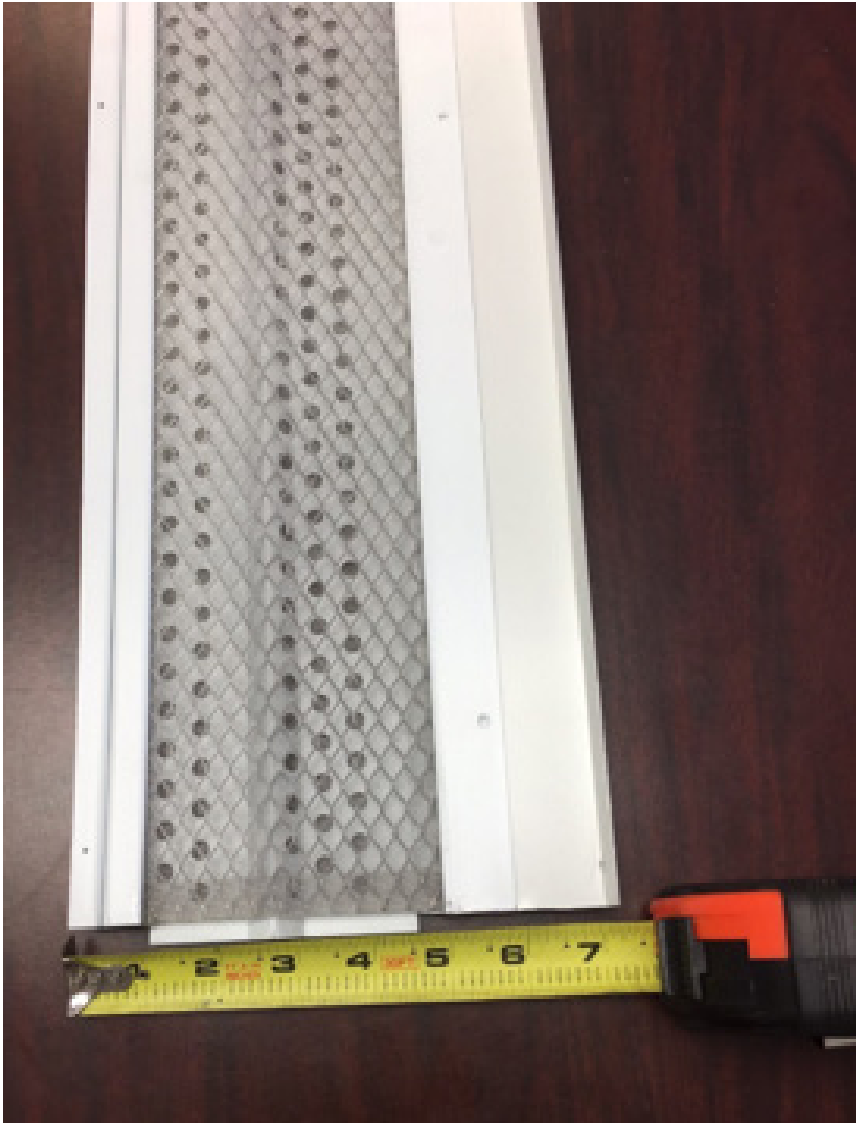
ONE Gutter Guard™ – Copper

Many homes have beautiful copper gutters and need a copper gutter guard to the beauty of the gutter system. Several models of ONE Gutter Guard™ can be made with copper. Please contact our sales department at (800) 919-5996 or at info@onegutterguard.com for prices and copper product specifications.



ONE Gutter Guard™ Custom Solutions

We designed ONE Gutter Guard™ in a such a way to provide customers with the ability to create a custom gutter guard. Whether you need a custom gutter guard for a commercial or residential gutter system, we can design something to fit your needs. Below is an example of a custom made ONE Gutter Guard™ for a 7" gutter. Please contact our sales department at (800) 919-5996 or at info@onegutterguard.com to discuss creating a custom gutter guard for you.



MESH INSERTS

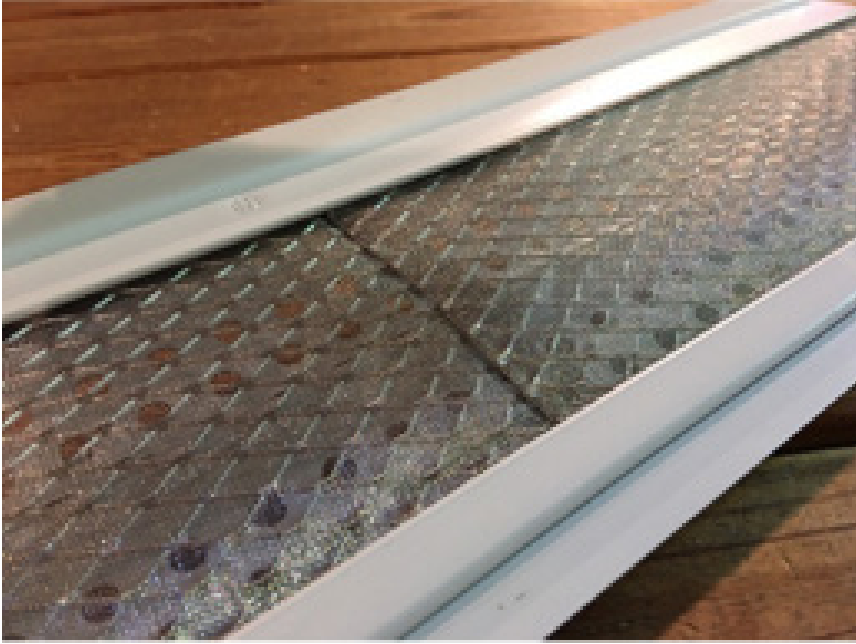
ONE Gutter Guard™ comes preloaded with 1 of 3 mesh inserts. Additional mesh inserts can be custom ordered. Please contact our sales department at (800) 919-5996 or at info@onegutterguard.com to learn more about mesh insert options.

18 mesh



The 18 mesh is changing the market and has an optimal balance of water drainage and debris shedding. The 18 mesh is fabricated from surgical stainless steel 18 mesh with a .017" wire diameter and is self-supporting with NO substrate. 18 mesh creates a larger opening than 42 mesh. 18 mesh has 990 microns which creates an open area of 48.16% which helps with faster water passage through the mesh insert. The average size of pollen is 300-400 microns and foliage can be 600 microns or larger, so a mesh with 990 microns will reduce the risk of clogs for it will facilitate debris entering the gutter system and flowing out of the system.

42 mesh



The 42 mesh offers a good balance between water flow and debris shedding. The 42 mesh is fabricated from 3003 aluminum non-flattened expanded substrate wrapped with surgical stainless steel 42 micro-mesh to create an impenetrable laminate. The 42 mesh has 440-460 microns and a .005" wire diameter with a 59.13% open area.

High Flow (The Grate)



The High Flow mesh insert is ideal for high water volume areas along with low debris environments. The High Flow mesh insert is fabricated from 3003 aluminum non-flattened expanded substrate with “micro” openings for maximum flow and minimal debris intrusion. The open area is 60% which is like the 42 mesh.

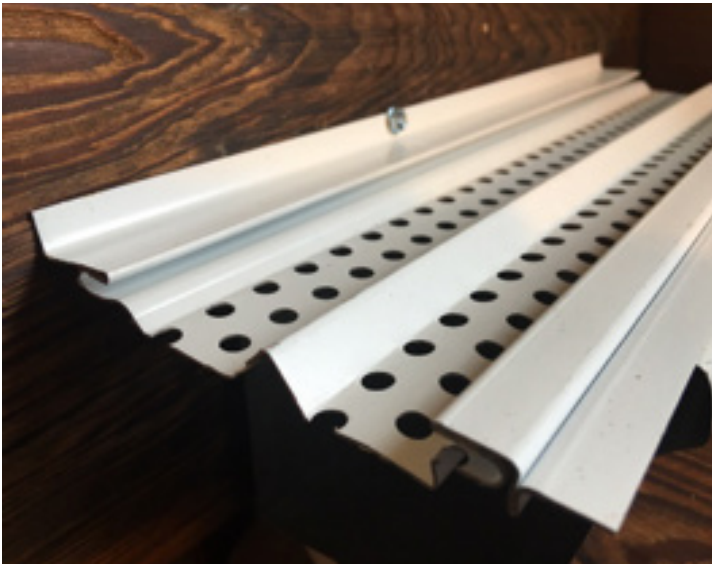
ONE Gutter Guard™ Features and Benefits

1. Pre-drilled chassis mounting holes on the front lip and fascia mount.



2. One piece, roll formed .024" painted aluminum chassis.

Because ONE Gutter Guard™ is a single piece of roll formed aluminum, it strengthens the entire gutter system (when fascia mounted) and becomes an integral part of that system. While the roll formed chassis is superior in its strength, the design allows "torsional" twist (see below) of the chassis over the 48" length to accommodate slope and tricky installations.

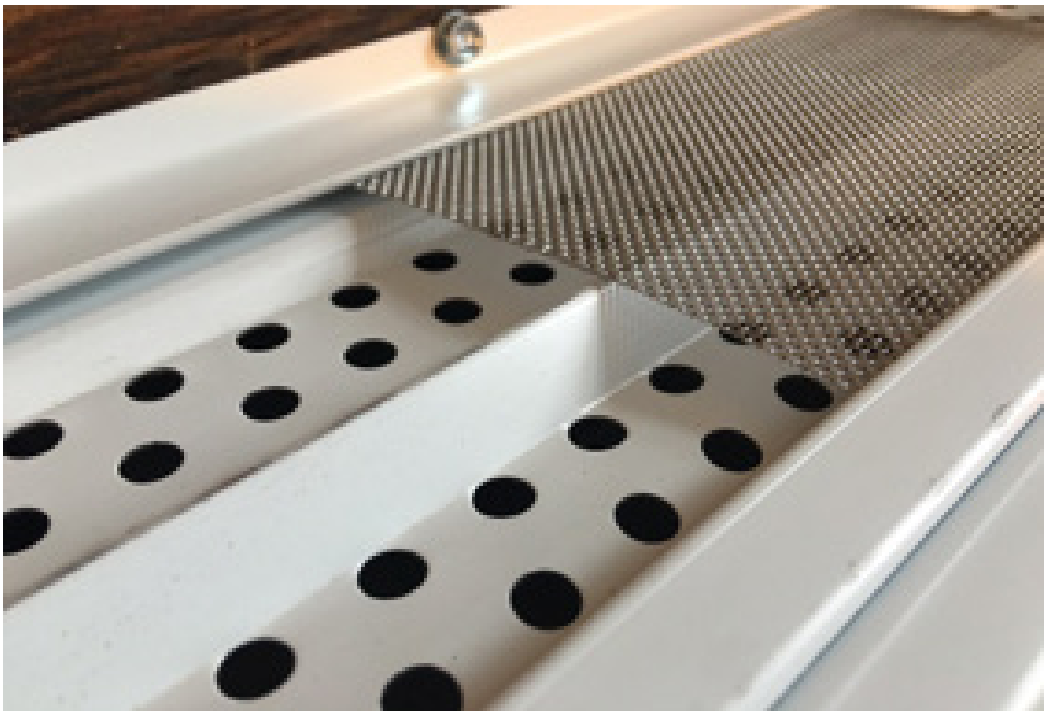


3. Alternating, strategically spaced drainage holes facilitate quick drainage in the chassis.



4. Dual Filter System.

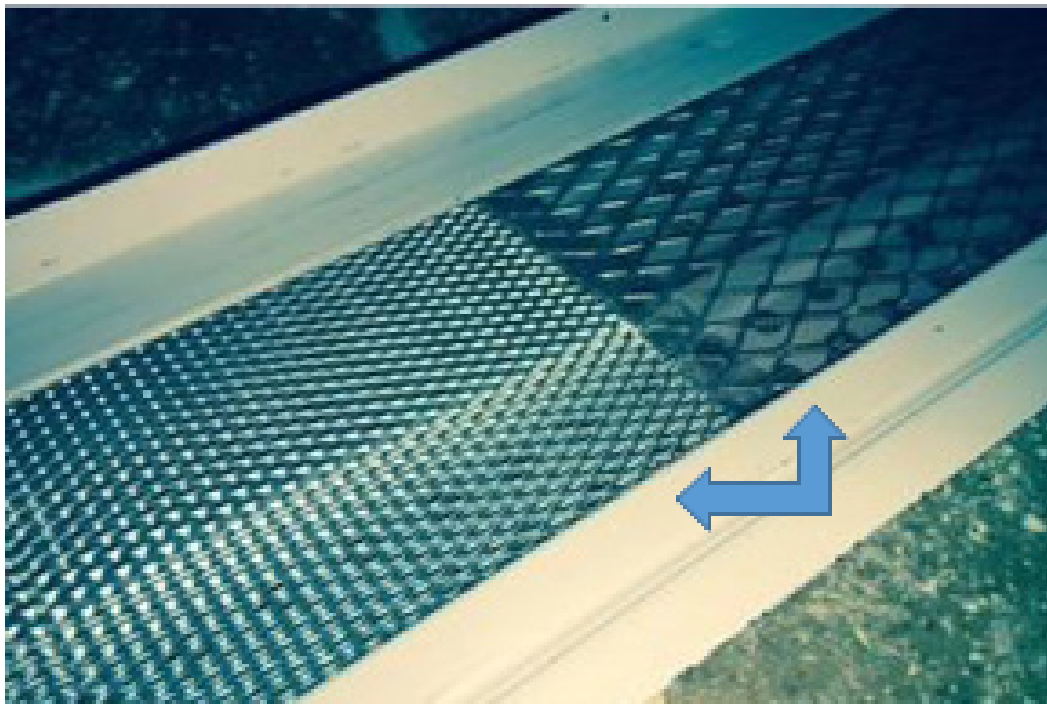
Insert and Chassis style creates a “dual filter” system for the gutter system, guaranteeing debris can never get to the gutter itself (dual line of defense). If creatures breach the mesh on most products, they are in the gutter. If they breach the ONE Gutter Guard™ insert, the perforated metal wall is present.



5. Inserts are “replaceable” at any time WITHOUT removing the installed chassis. They are pre-loaded in the product when received. If your customer’s environment changes over the years, you can simply and quickly replace the mesh insert.



6. Inserts can be consistent throughout the installation OR can be mixed/matched. The beauty of ONE Gutter Guard™ is you have choice and flexibility. You can use any mesh to accommodate different circumstances around the property. 18 mesh can be used on one side of a home while using 42 mesh on the other side. Or you can alternate 18 mesh and 42 mesh every other panel if you so choose.



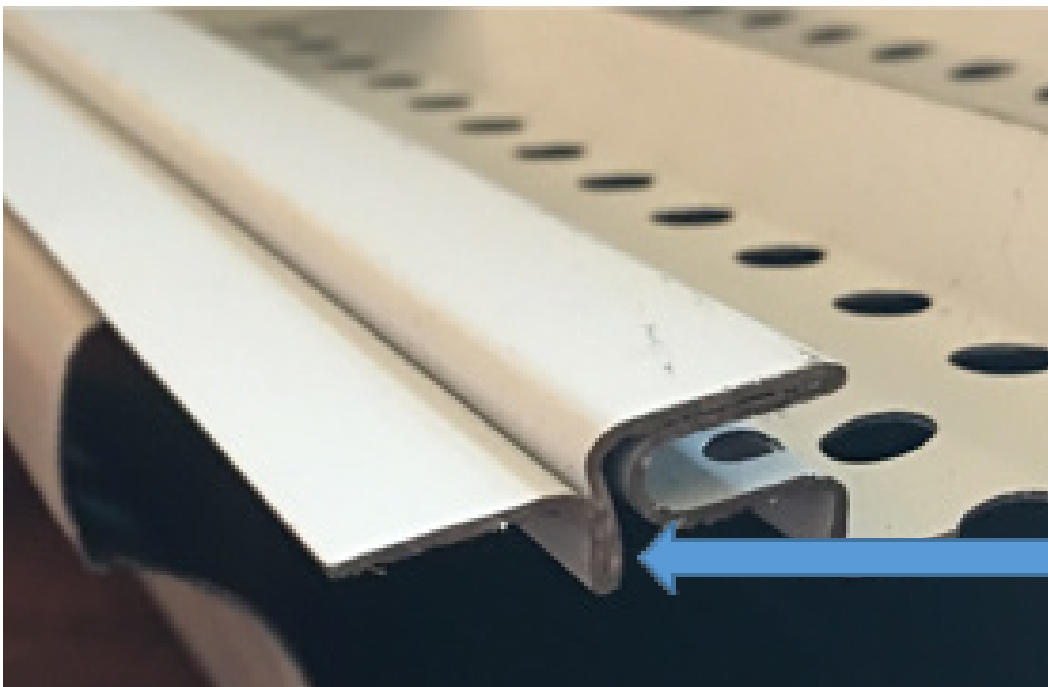
7. Weep Holes.

Weep holes in the mesh capture area eliminate edge dripping seen on almost all other gutter guards products on the market, but not with ONE Gutter Guard™. "Capillary" action on mesh stays "in the gutter".



8. Front edge vertical chassis locator.

Yields desired product slope during installation to obtain optimum debris shedding angle of 7+ degrees. Positively positions product during installation for consistency.



9. Heat cable compatible.

A heat cable can be strategically placed under the active membrane in the reservoir area for ice/snow control (new installation or retrofit).



10. Integral chassis overlap.

Chassis has integral "overlap" to maintain a continuous reservoir base and to assist in chassis placement during installation.



11. No caulk or adhesives.

All ONE Gutter Guard™ insert styles have an integral “underlap” where the adjacent insert “overlaps” the previous insert by ½ inch. NO seam breach is present and NO caulk or adhesives are required.



12. Chassis splice joints.

Chassis splice joints and insert splice joints NEVER occur at the same place. They are staggered intentionally to develop an impenetrable system (the chassis splice can barely be seen).



ONE Gutter Guard™ INSTALLATION PHOTO



Summary

ONE Gutter Guard™ is a revolutionary gutter guard that is patent pending and easy to install. We believe our product has unique features and benefits that cannot be found in any other gutter guard. Our product was designed to give you choice and flexibility. Please contact our sales department at (800) 919-5996 or at info@onegutterguard.com for additional product information.